

# Clay Notes

NOVEMBER 2010

Clay Notes, the monthly **Triangle Potters Guild** newsletter, and the TPG membership form are now available at [www.trianglepotters.org](http://www.trianglepotters.org). To get your announcements and news in the newsletter, send to: [trianglepottersguild@yahoo.com](mailto:trianglepottersguild@yahoo.com) by the 15th of each month.

## Our monthly meetings

are held on the first Tuesday of each month (no meetings June, July and August) at 7:30 pm. We will be meeting at the NCSU Craft Center, 100 Jensen Dr, Raleigh, NC.

Visitors are welcome!

## TPG BOARD

### President

Jo Ellen Westmoreland  
[jo\\_westmoreland@ncsu.edu](mailto:jo_westmoreland@ncsu.edu)

### Vice President

Susan Luster  
[susisolar@aol.com](mailto:susisolar@aol.com)

### Corresponding Secretary

Joanne Wood  
252-478-5385  
[jobear0101@peoplepc.com](mailto:jobear0101@peoplepc.com)

### Treasurer

Lauren Brockman  
[ltbrockman@hotmail.com](mailto:ltbrockman@hotmail.com)

### Recording Secretary

Neal O'Briant  
[neal126@yahoo.com](mailto:neal126@yahoo.com)

### Librarian

Christina Sydor  
[chris@boweninsurance.com](mailto:chris@boweninsurance.com)

## NEXT TPG MEETING

**Date:** Tuesday, November 2<sup>nd</sup>

**Location:** NCSU Craft Center, Thompson Hall, NCSU,

100 Jensen Dr, Raleigh

**Time:** 7:30 pm

Parking is available in the parking deck directly across from The Crafts Center entrance. You may be ticketed or towed if you park on the street – this is student parking only.

## NOVEMBER PROGRAM

### featuring Michael Mahon, From the Ground Up

Located just off the main road in 30 acres of woods, **From the Ground Up** continues to breathe new life into an ancient craft.

Michael Mahan began making pots seriously when he quit his job as a reporter at **The Courier-Tribune** in the mid 1980s. He had studied production pottery part-time for several years while a reporter and full-time for a couple of years at Montgomery Community College in Troy. He worked for a year for Jerry and Charlotte Fenburg of Humble Mill Pottery in the Seagrove area before opening up Wild Rose Pottery in Whynot, NC, where he and his first wife made functional and decorative pottery for ten years. While at Wild Rose Pottery, he and his wife worked as a team. He threw the pots. She decorated. And he glazed and fired them in two electric kilns. During the end of his time at Wild Rose Pottery, Michael began firing pieces that he burnished with terra sigillata in a sawdust kiln.

When he moved to his current shop in Moore County 10 miles south of Whynot, he built an underground kiln and fired his burnished pieces there, continuing a line of functional pots fired in electric kilns as well.

Last Fall, Michael built a 30 cubic-foot wood-fired kiln using designs by John Thies and Bill Van Gilder. The kiln is called a

Manabigama, and it fires a lot like a ground hog kiln but is built



above ground. He currently fires pieces with minimal glazing, learning what the flame can do.

Michael is probably best known for his tree designs right now. He has made many stamps of trees that he uses to impress a design into different sized platters and bowls which are formed in



plaster dishes to enable the stamping inside. He also stamps the outside of wheel-thrown pieces, shaping them from the inside after stamping is done. Michael also creates another type of tree design using sgraffito to draw the trees through a porcelain slip.

Michael and his wife, Mary Holmes, live in the upstairs of a renovated barn, on 30 acres. Michael's son, Levi, is currently living with them and helping out in the shop.

## MEETING MINUTES

### TPG October 2010 Business Meeting

Recorded by: Neal O'Briant

President Jo Ellen Westmoreland welcomed new members and visitors.

**Minutes:** Recording secretary Neal O'Briant asked if anyone

had changes to the minutes from September as posted in the newsletter. Minutes were approved.

**Library Report:** Christina Sydor announced that Hal Heatwole is donating Audrey's library to the guild. She will need to catalog and categorize the books. There are also magazines that will be available for members to take.

**Corresponding Secretary's Report:** Joanne Wood thanked the people who had contributed items for the newsletter and the people who had donated bowls for Urban Ministries. She wants to add a column to the newsletter for members to share tips or give reflections. November meeting newsletter will be the last newsletter for people who have not renewed. Joanne asked people to tell Lauren Brockman any changes to their addresses.

**Treasurer's Report:** Lauren Brockman announced that 50 members had renewed. She has projected 84 members for the year. She thanked Carol Clark for completing the financial audit. Lauren presented a summary of the budget for the coming year. A motion to accept the budget was made and passed.

#### **TPG Clay Demonstration**

**Requests:** Cheryl Weisz sent around a signup list for members interested in doing demos for outside groups. She had worked out payment so that people receive it the day they do a demo. She said there were seven requests last year and guild members were able to fill five of those. Cheryl will send Gail Lawson information about the demonstration program to put on the website.

**N.C. State Fair:** Johanna New reported that she had sent information about the fair to participants. They need to take pots on Wednesday, October 13. She wanted to meet with participants after the meeting. She said D.K. Clay will provide shelves. The commission on sales is 35 percent.

**Urban Ministries:** Donna Kanich thanked everyone who brought bowls. She said last year's Stone Soup Supper had raised more than \$24,000. Members will have one chance to win the \$100 Highwater gift certificate for every five bowls they donate. People can drop off bowls at the Craft Center's front desk.

**Workshop Committee:** Donna Kanich announced details about the Ellen Shankin workshop. There will be a Friday night talk and slideshow open to the public on March 25. The demonstration workshop will take place March 26 and 27. Guild members and NCSU students will receive first chance to register beginning December 1. The prices are \$45 for NCSU students, \$75 for TPG members and \$105 for nonmembers. The registration will open January 15 for nonmembers.

**Other New Business:** Jo Ellen Westmoreland mentioned that there is still space available in the Craft Center's raku workshop taught by Conrad Weiser on October 16-17.

Johanna New reminded members that Dan Finch is holding a Robin Hopper workshop on November 6-7. Lauren Brockman asked members to let her know if they are missing their nametags.

**Vice President's Update:** Susan Luster told about the programs she has set up for the remainder of 2010. Gail Lawson is the October presenter. Michael Mahan of From the Ground Up in Seagrove will be the presenter in November. She is hoping he will demo his tree pots. There will not be a regular meeting in December. Conrad Weiser will host a raku at his house in Durham on December 11 for Triangle Potters Guild members and Durham's Clay Works members. Conrad will have glazes and try to fire a pot for everyone who brings one. Joanne Wood volunteered to help organize food for the potluck at the raku party. Conrad

said he would be making Brita Tate's famous glögg.

**Refreshments:** Jo Ellen thanked Gail Lawson for bringing refreshments for the October meeting. Elise Stiles has volunteered to bring refreshment for the November meeting.

**Program:** Gail Lawson demonstrated how she sculpts a portrait bust. She will be teaching a class at Litmus Gallery in January. Gail follows Philippe Faraut's method. She started with a light bulb shape of clay that was over paper wrapped with tape on a paper towel roll core. Her initial sculpture was of a young woman. Gail then showed tricks of how she could alter the bust.

## **TPG EVENTS LAST CALL - BOWLS**

**The last count is 212 bowls** for this year's **Urban Ministries Stone Soup Supper** on November 16, 2010.

We are closing in on the 300 bowls, mugs and plates we promised for this important cause...Urban Ministries – a non-profit agency that provides medical care, prescriptions, food and other help to the non-insured working poor.

And remember that for every 5 bowls you bring in, you receive a chance on a \$100 gift certificate at Highwater Clay.

#### **Please note:**

- Bowls, mugs and plates must be able to sit flat with no cracks
- Bowls, mugs and plates may be left at the Crafts Center during business hours
- Please be sure your name is included in the box so that you get credit for your donation

For more information, email Donna Kanich at [dkanich@earthlink.net](mailto:dkanich@earthlink.net).

## **Holiday Raku Party** Triangle Potters Guild & Clayworks Guild

**Conrad Weiser** will host this year's holiday party at his home on **Saturday, Dec. 11**, starting

around noon...directions are on separate attachment this month.

Here (in Conrad's own words) is the party plan...

- If the Rakuistas want to start earlier, that's OK.
- We can aim at 3 pm or so to eat. Bring a dish to share and BYOB wine, beer or hooch and a few folding chairs for the studio.
  - Please contact Joanne Wood with your food offerings...  
[jobear0101@peoplepc.com](mailto:jobear0101@peoplepc.com)
- I will provide the traditional pot of glögg \* simmering away for those out in the cold, or those who would rather keep the pot warm inside and look at my pottery collection and/or talk. (Sort of like fireplace skiers). Some of these events have been rather nippy. (\*The glögg became a tradition many years ago when the December meetings were held at Brita Tate's home. It is our way to keep a bit of her with us--at least once a year).
- I will have several Raku glazes available at the party, but anyone who wants to glaze beforehand are welcomed to do so. If they are pre-glazed, we can get the process going faster. Pre-glazed pieces can be wrapped in plastic film, then a towel and they travel quite well.
- I have two smoking chambers (trash cans) a large, cut down 55 gallon drum, and a wash tub with a pile of wet woodchips. Others may bring their own smokers also.
- I will put out my spraying equipment also. I will save newspapers and have some wood chips on hand for the smoking.

## FOR SALE!

**Edge Barnes** is offering the hot wax pan that belonged to Audrey Heatwole for **free**. "Exactly what I paid for it," Edge states! Edge

also has some shelving boards and metal frames suitable for sales displays that he would like to sell reasonably.

## HELP WANTED!

**from Andi Dees**  
**Jordan Hall Arts Center**

I am looking for a couple of pottery instructors for Jordan Hall and the new facility.

Applications are filled out at the Town of Cary website. Here is the link

<http://agency.governmentjobs.com/townofcary/default.cfm>

The job title is Ceramic Arts Instructor.

Let me know if you have any other questions.

### Mrs. Andi Dees

Ceramic Arts Specialist  
Town of Cary  
Jordan Hall Arts Center  
908 N Harrison Ave  
Cary, NC 27513  
(919) 380-4231  
[andi.dees@townofcary.org](mailto:andi.dees@townofcary.org)

## WORKSHOPS

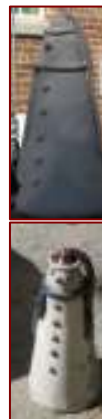


### October Raku Class

**from Cheryl Weis**

A group thank you goes out to Conrad Weiser for instructing the October raku class at the NCSU Craft Center.

There once was a pot in raku.  
Who didn't know quite what to do.  
It was ugly as sin when it went in,  
but, came out simply gorgeous, Thank You!



## OTHER EVENTS

### The Annual Dan Finch Studio Potters' Open

**House** will be held **Sunday November 14, 10 am – 5 pm** at the Dan Finch Blueberry Nursery located on Hwy 581 North in Bailey.

There will be pottery for sale from over 60 potters including Dan Finch.

In addition to pottery and sculpture, there will also be for sale ... jewelry, wooden bowls, blueberry plants and Jack Finch's Home for the Bluebirds boxes.

The Open House will occur **rain or shine**. There will also be raku firings. For the purchase of a \$20 bisqued pot, you get to glaze it yourself and then shop while it is being fired.

For more information about the show, go to [www.danfinch.com](http://www.danfinch.com).

### Call to Artists

**2nd Annual Holiday Pottery Show & Sale Application at Taste Full Beans Coffeehouse Gallery in Downtown Hickory**

10 am to 5 pm on Saturday, December 11, 2010

(This info was sent earlier this month in a separate email to all TPG members)

For more info, please contact...

**Rosalie De Fini Outlaw**

Outlaw Pottery, LLC Studio, School & Gallery  
1447 Highland Avenue NE  
Hickory, NC 28061  
Mobile: 828-896-5698  
[rosalie@outlawpottery.com](mailto:rosalie@outlawpottery.com)

### The Arts Council of Wilson

will feature Dan Finch & Finch Studio Potters at a pottery exhibit.

**Exhibit Dates:** Oct 7 thru Nov 8

**Location:** 124 Nash St SW, Wilson NC

[www.wilsonarts.com](http://www.wilsonarts.com)



## Call to Artists & Craftspeople from Jan Harris

You are invited to participate in **The Hillsborough Downtown Arts and Crafts Show.**

This juried show will offer original artwork and quality handcrafted items for sale on the lawn of the Historic Alexander Dixon House serving as the Orange County Visitors' Center in downtown Hillsborough, NC on April 16, 2011.

The Hillsborough Arts Council (HAC) will sponsor the event and promote it through myriad venues.

You will find more information at their website.  
<http://www.hillsboroughartscouncil.org/artscraftshow>

## Call to Artists From Jim Fatata

**Interpreting The Human Form 2010:** This unique annual exhibition, November 5-December 3, at Litmus Gallery & Studios will again showcase regional artists' outstanding original 2-D and 3-D interpretations of the human form in traditional, contemporary, and avant-garde creations. Various mediums will be represented. The opening/reception will be **5-9:00 pm on Friday, November 5, 2010.** The exhibition will be open by appointment November 6 - December 3, 2010. Email [artvision@bellsouth.net](mailto:artvision@bellsouth.net) or call 919-571-3605 to set up an appointment to view the exhibition after November 5.

## MEMBER NEWS

### TPG members' work selected...

The exhibit of the 16th Annual **Nellie Allen Smith Commemorative National Juried Pottery Competition** at Cape Fear Studios runs from October 22 thru November 22, 2010. Charlie Riggs juried the exhibit

... **Alice DeLisle** and **Edge Barnes** both have had pieces selected for this competition. Stay tuned for more info when the prizes are awarded.

To visit the exhibit, go to **Cape Fear Studios**  
148 Maxwell Street  
Fayetteville, NC 28301

## SLIPPERY TRAILS

Please share your thoughts, helpful tips, or reflections with your fellow TPG potters by sending them to [trianglepottersguild@yahoo.com](mailto:trianglepottersguild@yahoo.com).

Thanks to **Kathy Rodgers** for this month's tip:

I just found out something I didn't know from a potter in Statesville, and maybe other potters know about this, but if not could check it out. You can go onto YouTube and search for all kinds of pottery demonstrations from people all over the world! Since I'm a hand builder I entered "pottery + hand building + functional" and picked up several great tips! The Statesville potter uses a wheel and has entered "wheel throwing" along with "ornamental", "decorative", as well as "functional" and found great demonstrations. I can't wait to play with this more and thought other folks might enjoy, too!

## LINKS

**The Crafts Center**

[www.ncsu.edu/crafts](http://www.ncsu.edu/crafts)

(919) 515-2457

**Sertoma Arts Center**

[www.raleighnc.gov](http://www.raleighnc.gov)

(919) 420-2329

**Pullen Arts Center**

[www.raleighnc.gov](http://www.raleighnc.gov)

(919) 831-6126

**Claymakers**

[www.claymakers.com](http://www.claymakers.com)

(919) 530-8355

**Durham Arts Council**

[www.durhamarts.org](http://www.durhamarts.org)

(919) 560-2726

**Jordan Hall Arts Center**

[www.townofcary.org](http://www.townofcary.org)

(919) 469-4069

**Central Carolina Community College (CCCC)**

[www.cccc.edu](http://www.cccc.edu)

**Finch Pottery**

[www.danfinch.com](http://www.danfinch.com)

(252) 235-4664

(919) 742-4156

**Litmus Gallery**

[www.litmusgallery.com](http://www.litmusgallery.com)

(919) 571-3605



**Michael Mahon, From the Ground Up Pottery, is shown pressing tree images into a pot that he created...  
... Michael will give the presentation at our upcoming Nov 2 meeting**